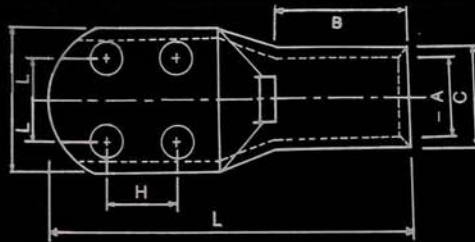


TINNED COPPER TERMINAL ENDS FOR TRANSFORMER - 4 HOLE LUGS



MATERIAL : High conductivity copper seamless copper to BS 287 - C 101.

FINISH : Uniformly Electro-tin plated. Also available in electrolytic Nickel plated for operating temperatures 350° C

COMPONENT NO.	CABLE SIZE SQ. MM.	STUD HOLE E	DIMENSIONS (MM)						
			A	C	B	D	K	H	L
SI - 300 - 4E8	300	8.5	23.5	30	42	58	17	20	115
SI - 400 - 4E8	400	8.5	28.5	36.5	44	58	17	20	120
SI - 500 - 4E8	500	8.5	30	39	48	58	17	20	124
SI - 630 - 4E10	630	8.5	35	45	56	65	17	25	144
SI - 630 - 4E10	630	10.5	35	45	56	65	17	25	144
SI - 800 - 4E8	800	8.5	39	50.6	78	73	20	30	170
SI - 1000 - 4E8	1000	8.5	43	56.2	90	81	25	40	200