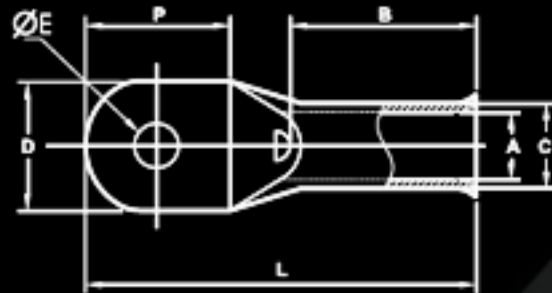




# Star Extrusion

## COMPRESSION CABLE LUGS - BELL MOUTHED



MATERIAL : E-COPPER

FINISH : ELECTRO-TINNED

FEATURES : BELL MOUTH ENTRY, WITH OR WITHOUT INSPECTION HOLE

SUITABILITY : FOR STRANDED TO FINE STRANDED COPPER CABLE

COMPONENT NO	CABLE mm <sup>2</sup>	STUD HOLE ØE	DIMENSIONS IN mm						PER BOX		
			A	C	D	P	B	L			
	10	5.2	4.4	6.9	11	11	10	29	500		
		6.2			12	18		11		38	
		8.2					17			24	41
		10.5									11
		13			11	29					
	16	5.2	5.6	8	11	11	11	29	500		
		6.2			18	22		11		38	
		8.2					18			22	42
		10.5									18
		13			18	22	42				
	25	6.2	7	9.5	13	19	14	42	200		
		8.2			16	23		14		47	
		10.5					18			23	47
		13									18
		13			18	23	47				
	35	6.2	8.2	11	16	19	15	43	200		
		8.2			18	22		15		48	
		10.5					20			24	50
		13									20
		14			20	24	50				
	50	6.5	9.5	12.1	18	18	18	48	150		
		8.2				22		27		18	52
		10.5			20		27				55
		13									20
		14			20	27	55				
	70	6.2	11.5	15	21	20	19	50	75		
		8.2				22		34		19	54
		10.5			24		34				63
		13									24
		14			24	34	63				
17	24	34	63								

	95	8.2	13.5	17	25	24	24	60	50		
		10.5								32	67
		13									
		14									
		17									
	10.5	15	19	28	29	29	72	40			
	13								30	76	
	14										
	17										
	21										
	10.5	16.5	21	30	32	30	74	30			
	13								32	93	
	14										
	17										
	21										
	10.5	18.5	23.4	34	37	32	85	25			
	13								37	110	
	14										
	17										
	21										
	10.5	21	26	38	42	36	93	15			
	13								42	111	
	14										
	17										
	21										
	10.5	23	28	40	47	44	110	10			
	13								47	127	
	14										
	17										
	21										
	13	27	36	51	48	44	111	5			
	14								48	127	
	17										
	21										
	10.5			30		38.1	55		50		56
	13	50	130								
	14										
	17										
	21										
	10.5	34	44	62	52	50	130	5			
	13								52	164	
	14										
	17										
	21										
	21	38	49	70	68	56	164	1			
	27										
	21	42.5	53	77	68	56	169	1			
	27										

\* Straight Barrel Entry