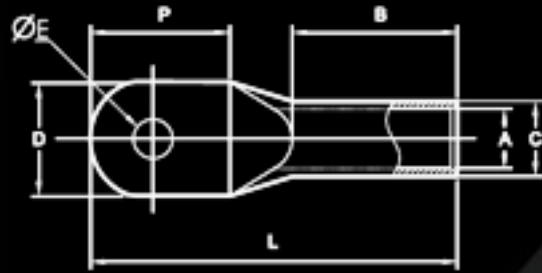




Star Extrusion

COMPRESSION CABLE LUGS - SEALED PALM



MATERIAL : E-COPPER
 FINISH : ELECTRO-TINNED
 FEATURES : WITHOUT INSPECTION HOLE

COMPONENT NO	CABLE mm ²	STUD HOLE ØE	DIMENSIONS IN mm						PER BOX
			A	C	D	P	B	L	
16	13	13	5.9	8	20	24	34	65	150
		BLANK							
25	13	13	7	9.7	18	21	41	69	100
		BLANK							
35	13	13	8.4	11.5	22	25	41	75	100
		BLANK							
50	13	13	9.5	12.7	22	27	41	78	75
		BLANK							
70	13	13	11.1	14.3	21	25	47	80	75
		BLANK			28	45		101	
95	13	13	13.5	17.5	26	31	47	89	50
		BLANK							
120	13	13	15.5	20.6	29	33	62	104	30
		BLANK							
150	13	13	16.3	22.2	33	32	62	112	25
		17				38		118	
		BLANK							
185	13	13	18.3	24.3	35	32	62	112	20
		17				35		118	
		BLANK							
240	13	13	21.2	28.6	40	42	77	144	10
		17							
		BLANK							
300	17	17	23.8	31.9	45	50	88	163	5
		21							
		BLANK							

	400	17	26.8	34.8	49	50	88	163	3
		21							
		BLANK							
	500	17	30	38	55	50	88	167	1
		21							
		BLANK							
	630	17	33.5	45	63	55	100	192	1
		21							
		BLANK							