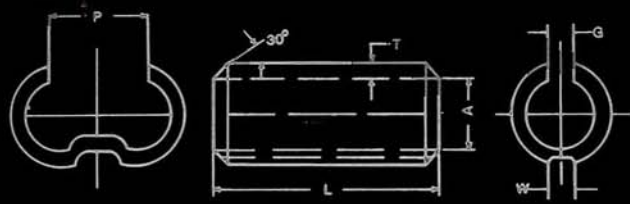


TINNED COPPER WEAK BACK FERRULES



MATERIAL : High conductivity copper to BS 2874 - C 101.
FINISH : Uniformly Electro-tin plated.

COMPONENT NO.	CABLE SIZE SQ. MM.	DIMENSIONS (MM)						
		A	C	D	L	T	P	W
SIWB - 6	6	3	4.6	2	20	0.8	3	-
SIWB - 10	10	4.4	6	2	25	0.8	4	-
SIWB - 16	16	5.5	7.5	2	25	1	5	1.5
SIWB - 25	25	7	9	2	30	1	7	1.5
SIWB - 35	35	8	10.4	2	35	12	8	1.5
SIWB - 50	50	9.5	11.9	2	40	12	9	1.5
SIWB - 70	70	12	14.8	3	45	14	12	3
SIWB - 95	95	13.5	16.3	3	50	14	13	3
SIWB - 120	120	15.5	18.7	4	55	16	15	3.4
SIWB - 150	150	17	20.6	4	60	16	16	5
SIWB - 185	185	18.5	22.9	4	65	18	18	5
SIWB - 225	225	20.5	24.9	5	75	20	20	5
SIWB - 240	240	22	26.4	5	80	21	21	5
SIWB - 300	300	24	29.6	5	85	23	23	5
SIWB - 400	400	28.5	34.7	7	95	27	27	5
SIWB - 500	500	30.5	37.5	7	105	30	30	5
SIWB - 625	625	34.5	42.5	8	115	33	33	5