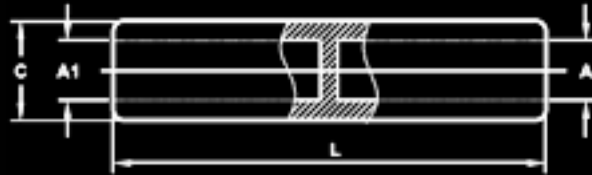
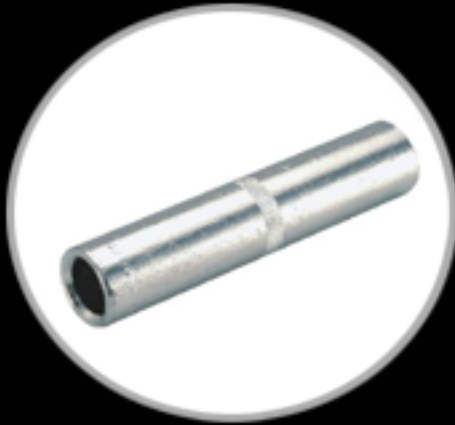




Star Extrusion

COMPRESSION CONNECTORS WITH SOLID BARRIER



MATERIAL : E-COPPER

FINISH : ELECTRO-TINNED

COMPONENT NO	CABLE SIZE		DIMENSIONS IN mm				PER BOX
	mm ²	mm ²	A	A1	C	L	
	35	35	8.2	8.2	11	60	100
	35	50	8.2	10	13	60	75
	50	50	10	10	13	60	75
	50	70	10	11.5	16	65	40
	70	70	11.5	11.5	16	65	40
	70	95	11.5	14	20	85	20
	95	95	14	14	20	85	20
	95	120	14	15.5	22	95	15
	120	120	15.5	15.5	22	95	15
	120	150	15.5	17	23.5	105	10
	150	150	17	17	23.5	105	10
	150	185	17	19	24	115	10
	120	185	15.5	19	24	115	10
	185	185	19	19	24	115	10
	185	240	19	21.5	28	125	5
	240	240	21.5	21.5	28	125	5
	150	240	17	21.5	28	125	5
	240	300	21.5	24.5	31.5	140	5
	185	300	19	24.5	31.5	140	5
	300	300	24.5	24.5	31.5	140	5
	300	400	24.5	27.5	36.5	170	3
	400	400	27.5	27.5	36.5	170	3