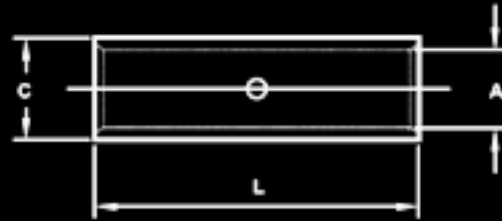




Star Extrusion

COMPRESSION JOINT - HEAVY DUTY



- STANDARD : DIN 46267, PART 1
- MATERIAL : E-COPPER
- FINISH : ELECTRO-TINNED
- FEATURES : CABLE STOP FACILITY

COMPONENT NO	CABLE mm ²	DIMENSIONS IN mm			PER BOX
		A	C	L	
	6	3.8	5.5	30	750
	10	4.5	6	30	750
	16	5.5	8.5	50	200
	25	7	10	50	150
	35	8.2	12.5	50	75
	50	10	14.5	56	60
	70	11.5	16.5	56	50
	95	13.5	19	70	30
	120	15.5	21	70	25
	150	17	23.5	80	20
	185	19	25.5	85	15
	240	21.5	29	90	10
	300	24.5	32	100	10
	400	27.5	38.5	150	3
	500	31	42	160	2
	630	34	44	160	2
	800	40	52	200	1
	1000	44	58	200	1