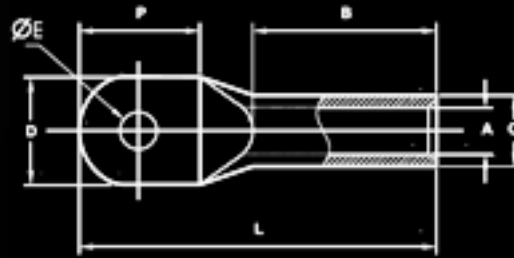




Star Extrusion

COMPRESSION CABLE LUGS - ALUMINIUM



MATERIAL : ELECTROLYTIC GRADE AL 99.5

FINISH : BRIGHT OR ELECTRO-TINNED

FEATURES : BARREL PREFILLED WITH OXIDE INHIBITING COMPOUND & CAPPED AT THE END

COMPONENT NO	CABLE SIZE mm ²	ØE	DIMENSIONS IN mm						PER BOX
			A	C	D	P	B	L	
	16	8.2	5.5	11	20	21	41	69	150
		10.5							
	25	8.2	6.5	15	22	21	41	69	75
		10.5							
	35	10.5	8	15	25	22	50	79	75
		13							
	50	10.5	9.7	18	26	24	50	81	45
		13							
	70	10.5	11	18	26	26	62	95	40
		13							
	95	10.5	13.1	20	29	28	73	109	35
		13							
	120	13	14.7	22	32	30	73	114	20
		17							
	150	13	16.5	25	36	34	83	128	10
		17							
	185	21	18.1	31	45	36	83	131	5
		13							
	240	17	21	31	45	44	86	144	5
		13							
	300	17	23.2	38	55	54	89	157	5
		21							

	400	17	26	38	55	60	113	187	5
		21							
	500	17	29	45	65	64	125	205	2
		21							
	630	17	33.5	45	65	68	140	225	2
		21							
	800	21	37.6	58	84	78	147	250	2
		27							
	1000	21	41.5	60	87	90	160	280	2
		27							

