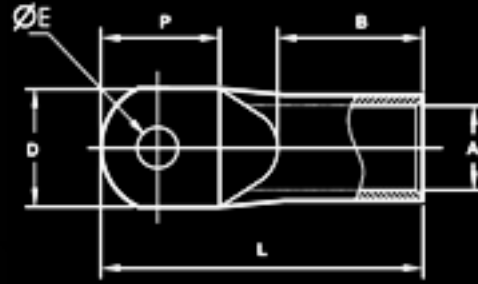




# Star Extrusion

## COMPRESSION CABLE LUGS - NARROW PALM



MATERIAL : E-COPPER  
 FINISH : ELECTRO-TINNED  
 FEATURES : WITHOUT INSPECTION HOLE

COMPONENT NO	CABLE mm <sup>2</sup>	STUD HOLE ØE	DIMENSIONS IN mm					PER BOX
			A	D	P	B	L	
	35	6.5	8.2	13	20	16	44	200
		8.5						
	50	8.5	9.5	15	23	19	49	150
		10.5						
	70	8.5	11.2	17.5	25	21	55	100
		10.5						
		13						
	95	8.5	13.5	21	27	23	62	75
		10.5						
		13						
	120	10.5	15.5	21	28	28	72	50
		13						
	150	10.5	16.5	21	32	28	75	40
		13						
		17						
	185	10.5	18.5	27	38	31	85	30
		13						
		17						
	240	10.5	21.5	30	43	35	95	20
		13						
		17						
	300	13	23.5	32	47	44	110	15
		17						