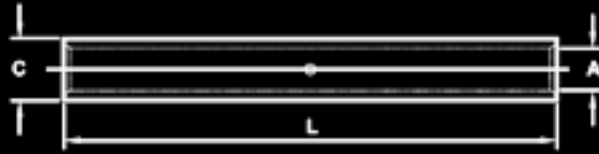
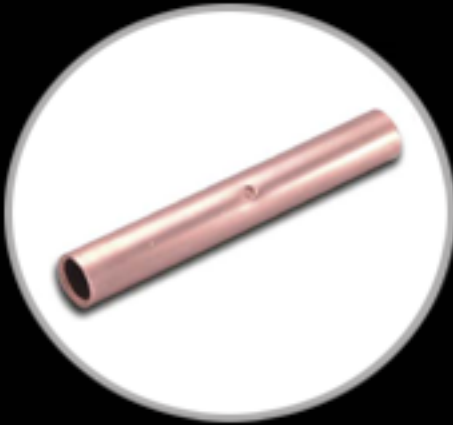




Star Extrusion

COMPRESSION JOINTS - FULL TENSION



MATERIAL : E-COPPER
FINISH : UNTINNED
FEATURES : CABLE STOP FACILITY
APPLICATION : UP TO 36 K.V

| COMPONENT NO | CABLE mm ² | DIMENSIONS IN mm | | | PER BOX |
|--------------|-----------------------|------------------|------|-----|---------|
| | | A | C | L | |
| | 6 | 3.5 | 6.5 | 65 | 200 |
| | 10 | 4.5 | 8.5 | 80 | 100 |
| | 16 | 5.5 | 8.5 | 95 | 100 |
| | 25 | 7 | 10 | 95 | 75 |
| | 35 | 8.2 | 12.5 | 95 | 50 |
| | 50 | 10 | 14.5 | 110 | 25 |
| | 70 | 11.5 | 16.5 | 110 | 25 |
| | 95 | 13.5 | 21 | 145 | 10 |
| | 120 | 15 | 23.5 | 160 | 5 |
| | 150 | 16.5 | 25.5 | 180 | 5 |
| | 185 | 18.5 | 31.5 | 260 | 2 |
| | 240 | 21 | 34.5 | 310 | 1 |
| | 300 | 23.5 | 38.5 | 360 | 1 |