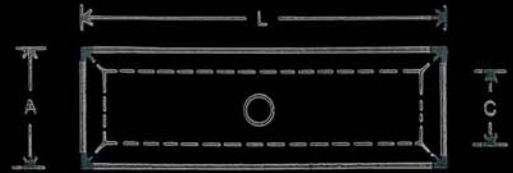


## TINNED COPPER IN-LINE CONNECTORS



**MATERIAL** : High conductivity seamless copper tube to BS 2874 - C 101,

**FEATURES** : Connections are provided with a dimple which acts as a conductor stop and ensures that the conductors are inserted fully and equally before crimping.

**FINISH** : Uniformly Electro-tin-plated for operating temperatures up to 150° C, Also available in electrolytic Nickel plated for the connectors operating upto 350° C

COMPONENT NO.	CABLE SIZE SQ. MM.	DIMENSIONS (MM)		
		A	C	L
SISB - 1.5	1.5	1.8	3.7	22
SISB - 2.5	2.5	2.4	4	22
SISB - 4	4	3.1	4.8	22
SISB - 6	6	3.8	5.5	22
SISB - 10	10	4.5	6.2	22
SISB - 16	16	5.4	7.1	44
SISB - 20	20	6.3	7.7	44
SISB - 25	25	6.8	8.8	47
SISB - 35	35	8.2	10.6	47
SISB - 50	50	9.5	12.4	47
SISB - 70	70	11.2	14.7	50
SISB - 95	95	13.5	17.4	54
SISB - 120	120	15	19.4	65
SISB - 150	150	16.5	21.2	65
SISB - 185	185	18.5	23.5	65
SISB - 240	240	21	26.5	89
SISB - 300	300	23.5	30	89
SISB - 400	400	28.5	36.5	90
SISB - 500	500	30	39	115
SISB - 550	550	31.7	41.5	115
SISB - 630	630	35	45	115
SISB - 800	800	39	50.6	230
SISB - 1000	1000	43	56.2	230

COMPONENT NO.	CABLE SIZE SQ. MM.	DIMENSIONS (MM)		
		A	C	L
SILB - 1.5	1.5	1.8	3.7	12
SILB - 2.5	2.5	2.4	4	15
SILB - 4	4	3.1	4.8	15
SILB - 6	6	3.8	5.5	15
SILB - 10	10	4.5	6.2	20
SILB - 16	16	5.4	7.1	20
SILB - 20	20	6.3	7.7	22
SILB - 25	25	6.8	8.8	32
SILB - 35	35	8.2	10.6	36
SILB - 50	50	9.5	12.4	40
SILB - 70	70	11.2	14.7	45
SILB - 95	95	13.5	17.4	45
SILB - 120	120	15	19.4	45
SILB - 150	150	16.5	21.2	55
SILB - 185	185	18.5	23.5	60
SILB - 240	240	21	26.5	80
SILB - 300	300	23.5	30	85
SILB - 400	400	28.5	36.5	85
SILB - 500	500	30	39	100
SILB - 550	550	31.7	41.5	110
SILB - 630	630	35	45	110
SILB - 800	800	39	50.6	150
SILB - 1000	1000	43	56.2	170