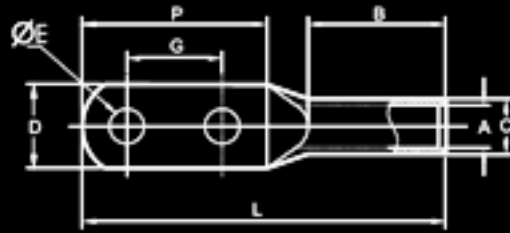




Star Extrusion

COMPRESSION CABLE LUGS - ALUMINIUM, WITH TWO HOLES



MATERIAL : ELECTROLYTIC GRADE AL 99.5

FINISH : BRIGHT OR ELECTRO-TINNED

FEATURES : BARREL PREFILLED WITH OXIDE INHIBITING COMPOUND & CAPPED AT THE END

COMPONENT NO	CABLE SIZE mm ²	ØE	DIMENSIONS IN mm							PER BOX
			A	C	D	P	G	B	L	
	35	13	8	15	22	76	44	50	133	40
	50	13	9.7	18	25	76	44	50	133	20
	70	13	11	18	25	76	44	62	145	20
	95	13	13.1	20	28	76	44	73	157	20
	120	13	14.7	22	32	76	44	73	160	20
	150	17	16.5	25	36	80	44	83	174	10
	185	17	18.1	31	45	80	44	83	175	10
	240	17	21	31	45	80	44	86	180	10
	300	17	23.2	38	55	80	44	89	183	10
	400	17	26	40	58	80	44	113	207	5
	500	17	29	45	65	80	44	125	221	5

DIMENSION 'G' AS PER REQUIREMENT ALSO AVAILABLE