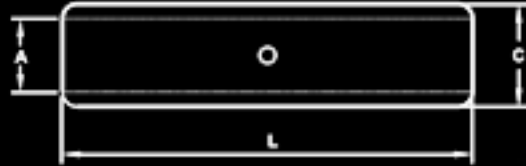




Star Extrusion

COMPRESSION JOINTS ALUMINIUM - LONG BARREL



- MATERIAL : ELECTROLYTIC GRADE AL 99.5
FINISH : BRIGHT OR ELECTRO TINNED
APPLICATION : UP TO 36 KV
FEATURES : BARREL PREFILLED WITH OXIDE INHIBITING
COMPOUND & CAPPED AT BOTH ENDS

COMPONENT NO	CABLE mm ²	DIMENSIONS IN mm			PER BOX
		A	C	L	
	16	5.5	11	55	200
	25	6.5	15	70	75
	35	8	15	85	75
	50	9.7	18	85	40
	70	11	18	106	35
	95	13.1	20	106	20
	120	14.7	22	106	20
	150	16.5	25	135	10
	185	18.1	31	135	5
	240	21	31	145	5
	300	23.2	38	150	5
	400	26	38	205	5
	500	29	45	205	5
	630	33.5	45	220	5
	800	37.6	58	280	2
	1000	41.5	60	280	2